

CR

CR7.90 | CR9.80



New Holland CR range: Tons Better.

New Holland revolutionized the way farmers harvested over 35 years ago with the introduction of ground-breaking Twin Rotor™ technology for combines. Today's latest generation of CR combines continues the pure rotary bloodline and offers the world's farmers best-in-class grain and straw quality thanks to the gentle multipass action. New Holland has continued its unceasing quest for harvesting improvement, and the all-new, optional Dynamic Feed Roll™, with integrated dynamic stone protection has improved capacity by up to 15%. Innovative features such as the SmartTrax™, IntelliCruise, IntelliSteer® and Opti-Spread™ systems further enhance productivity, and continue to ensure that the CR range is one of the most advanced and productive in the world.

Outstanding capacity

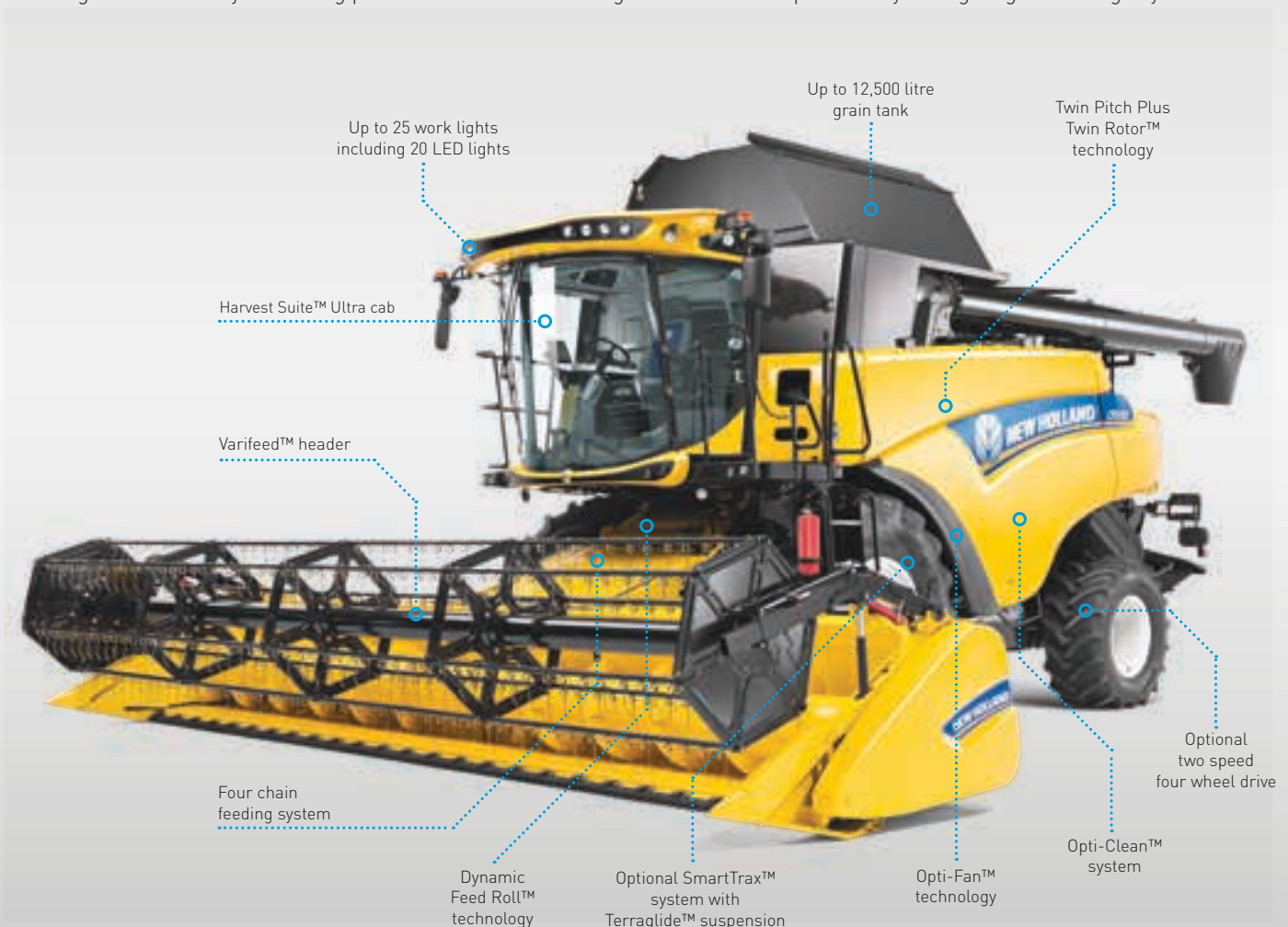
On 15th August 2014 the CR combine obliterated the current harvesting record. During the record it harvested 797.656 tonnes of wheat in under eight hours, in real world conditions. The 571hp FPT Industrial Cursor 13 engine provides the power, and advanced harvesting technology including IntelliSteer® auto guidance, means you can harvest around the clock without stopping. The new optional Dynamic Feed Roll, with integrated dynamic stone protection has improved already impressive capacity by up to 15% as well as enhancing crop flow into the rotors and reducing grain crackage. Quite simply, a 360° capacity and quality improvement. The CR, keeps going as long as you do.

Superior harvest quality

Unsurpassed grain and straw quality is guaranteed courtesy of gentle, yet highly efficient Twin Rotor™ technology. Grain crackage is a thing of the past with an Industry leading figure of just 0.1%, Opti-Clean™ ensures the cleanest grain sample and you can choose between two types of rotor to match your individual harvesting needs.

Absolute driving pleasure

When you step up into the Harvest Suite™ Ultra cab you'll feel immediately at home. The biggest, 130ft³ cab with 67ft² of glass, and quietest, 73dB(A) cab on the market boasts the IntelliView™ IV colour touchscreen monitor for intuitive operation and fingertip management of all key harvesting parameters for reduced fatigue and increased productivity during long harvesting days.



SPECIFICATIONS

Models		CR7.90	CR9.80
Grain header			
Cutting width: High-Capacity grain header	(ft)	17 - 30	20 - 30
Varifeed™ grain header - 22,6in. knife travel	(ft)	16 - 35	22 - 41
Superflex headers cutting width	(ft)	20 - 30	25 - 35
Knife speed Standard / Varifeed™ grain header	(cuts/min.)	1150 / 1300	1150 / 1300
Spare knife and spare bolted knife sections		●	●
Feeding auger with full-width retractable fingers		●	●
Reel diameter Standard / Varifeed™ grain header	(ft)	3.5	3.5
Electro-hydraulic reel position adjustment		●	●
Automatic reel speed synchronisation to forward speed		●	●
Hydraulic quick coupler (single location)		●	●
Corn headers			
Number of rows flip-up maize headers		6 / 8	8
Number of rows rigid maize headers		12	12 / 16
Integrated stalk choppers		○	○
Rotary dividers		○	○
Automatic header control systems			
Automatic stubble height control		●	●
Compensation mode		●	●
Autofloat™ system		●	●
Straw elevator			
Number of chains		3	4
Fixed feeder drive		●	●
Variable feeder drive		○	○
Power Reverse™ hydraulic header and elevator reverser		●	●
Lateral flotation		●	●
Front face adjustment		●	●
ASP system (Advanced Stone Protection)		●	●
DFR system (Dynamic Feed Roll™)		○	○
Harvest Suite™ Ultra cab glass area			
	(ft²)	68	68
Cab category level - EN 15695		2	2
HID working lighting pack		○	○
LED working lighting pack		○	○
LED long distance lights		○	○
Standard cloth trimmed seat with air-suspension		●	●
Deluxe cloth trimmed heated air-suspension seat with Active Ventilation		○	○
Leather trimmed heated air-suspension seat with Active Ventilation		○	○
Instructor seat		●	●
Leather Steering wheel		○	○
CommandGrip™ handle		●	●
IntelliView™ IV monitor with adjustable position		●	●
2 nd IntelliView™ IV monitor		○	○
Wide Angle Shatterproof Mirrors		●	●
3 viewing cameras		○	○
ACS (Automatic Crop Settings)		●	●
Air-conditioning and coolbox		●	●
Automatic climate control		○	●
Heating		○	●
Removable fridge		●	●
MP3 Bluetooth radio (hands free phone calls)		○	○
4 speaker system		●	●
Optimum cab noise level - ISO 5131	(dB(A))	73	73
New Holland Precision Land Management systems			
PLM® Connect Telematics			
		○	○
Guidance systems			
SmartSteer™ automatic guidance system		○	○
IntelliSteer™ ready automatic guidance system		○	○
IntelliCruise™ system		○	○
Automatic row guidance system for maize headers		○	○
Precision farming			
Moisture measuring		○	○
Yield measuring and moisture measuring		○	○
Full Precision farming package including:			
Yield measuring and moisture measuring, DGPS yield mapping		○	○
Desktop software and software support service		○	○
Twin Rotor™ technology			
Twin Pitch rotors		●	●
S³ rotors		○	○
Rotor diameter	(in.)	17	22
Rotor length	(in.)	103.8	103.8
Length of auger section	(in.)	15.3	15.3
Length of threshing section	(in.)	29	29
Length of separation section	(in.)	43	43
Length of discharge section	(in.)	16.5	16.5
Fixed rotor vanes		●	○
Adjustable rotor vanes		○	●
Threshing concaves:			
Wrap angle	(°)	86	84
Wrap angle with extension	(°)	121	123
Electric adjustment		●	●
Separation concaves:			
Separation grates per rotor		3	3
Wrap angle	(°)	148	148

SPECIFICATIONS

Models		CR7.90	CR9.80
Beater			
Width	(ft)	51.1	61.4
Diameter	(ft)	15.7	15.7
Beater concave wrap angle	(°)	54	54
Total threshing and separation area	(ft ²)	26.2	32.9
Cleaning			
Self-levelling cleaning shoe		●	●
Pre-cleaning system		●	●
Opti-Clean™ cleaning system		●	●
Total sieve area under wind control	(ft ²)	58.1	70
Remote control sieve setting		●	●
Cleaning fan			
Number of blades		6	6
Variable speed range	(rpm)	200 - 1050	200 - 1050
Double outlet fan		●	●
Electrical speed adjustment from the cab		●	●
Return system			
Double Roto-Thresher™ system		●	●
Returns indication on IntelliView™ IV monitor		●	●
Grain elevator			
High capacity grain elevator with heavy duty chain & flaps		●	●
Grain tank			
Folding covers capacity	(l)	9500 / 11500	12500
Central filling, folding bubble-up extension		●	●
Unloading auger			
Overtop unloading		●	●
Unloading speed	(l/s.)	126	126
Grain sample inspection door		●	●
Grain tank fill warning device		●	●
Unloading auger swivel reach	(°)	105	105
Electrical			
12 volt alternator	(Amps)	190	190
Battery capacity	(CCA / Ah)	730 / 2x107	730 / 2x107
Engine			
Compliant with engine emissions regulations		Tier 4A/Stage 3B	Tier 4B/Stage 4
Capacity	(ft ³)	307	455
ECODBlue™ system [Selective Catalytic Reduction]		SCR	HI-eSCR
Injection system		Unit injectors	Common Rail
Gross engine power @ 2100rpm - ISO TR14396 - ECE R120	[kW/hp/CV]	300/408	390/530
Maximum engine power @ 2000rpm - ISO TR14396 - ECE R120	[kW/hp/CV]	315/422	390/530
Approved biodiesel blend**		B20	B7
Electronic governor type		●	●
Fuel consumption measuring and read-out on IntelliView™ IV monitor		●	●
Air compressor		○	○
Engine blow off system		○	○
Fuel tank			
Diesel capacity / AdBlue capacity	(l)	750 / 120	1000 / 160
Transmission			
Hydrostatic		●	●
Gearbox		4-speed	4-speed
Remote gearshifting		●	●
Differential lock		●	●
Two speed powered rear wheels engagement		○	○
Maximum speed Standard / Optional	(kph)	30 / 40	30 / 40
SmartTrax™ system		-	○
SmartTrax™ rubber tracks with Terraglide™ suspension		-	○
Residue management			
Integrated straw chopper		●	●
PSD (Positive Straw Discharge) belt		●	●
Remote adjustable deflectors		○	●
Remote chop / drop selection		○	○
Chaff spreader		○	○
Opti-Spread™ residue management		○	○
Weight			
Standard version on tyres, less header and less strawchopper	(kg)	17769	19623

● Standard ○ Optional - Not available * Developed by FPT Industrial ** Biodiesel blend must fully comply with the latest fuel specification EN14214:2009 and operation is in accordance with operator manual guidelines *** When fitted with 24" SmartTrax™ rubber tracks with Terraglide™ suspension

Model Dimensions	CR7.90					CR9.80				
	Tyres		SmartTrax ^(B)			Tyres		SmartTrax		
With traction wheels / tracks ^(A)	710/70R42	900/60R38	24"	28.5"	34" ^(D)	800/70R32	900/60R38	24"	28.5"	34" ^(D)
Ground contact area	(ft ²)	-	16	19	22.7	-	-	16	19	22.7
Maximum height in transport position	(ft)	13	12.8	12.9	13	13	13.1	13	13.1	13
Maximum width - transport	(ft)	10.7	11.9	10.6	11.4	12.4	12.2	12.7	11.4	12.2
Maximum length with extended unloading tube without header ^(C)	(ft)	32.7	32.7	32.7	32.7	32.7	32.7	32.7	32.7	32.7

(A) Traction wheels / tracks other than those mentioned are available: 710/70R42, 800/70R32, 800/75R32, 900/60R32, 900/60R38, 900/65R32/R2, 1050/50R32 and SmartTrax 24", 28.5", 30"
 (B) SmartTrax not available on the CR7.90 (C) With 3ft extension and canvas (D) Only available in Terraglide™ suspension version



www.newholland.com/za

The data indicated in this folder are approximate. The models described here can be subjected to modifications without any notice by the manufacturer. The drawings and photos may refer to equipment that is either optional or intended for other countries. Please apply to our Sales Network for any further information. Published by New Holland Brand Communications. Bts Adv. - Printed in Italy - 05/18 - (Turin) - RSA8275N/INB

New Holland prefers AMBRA lubricants